



# Cannabinoid Profile

Sacred Heart Vortex  
Philip and Susan Madeley

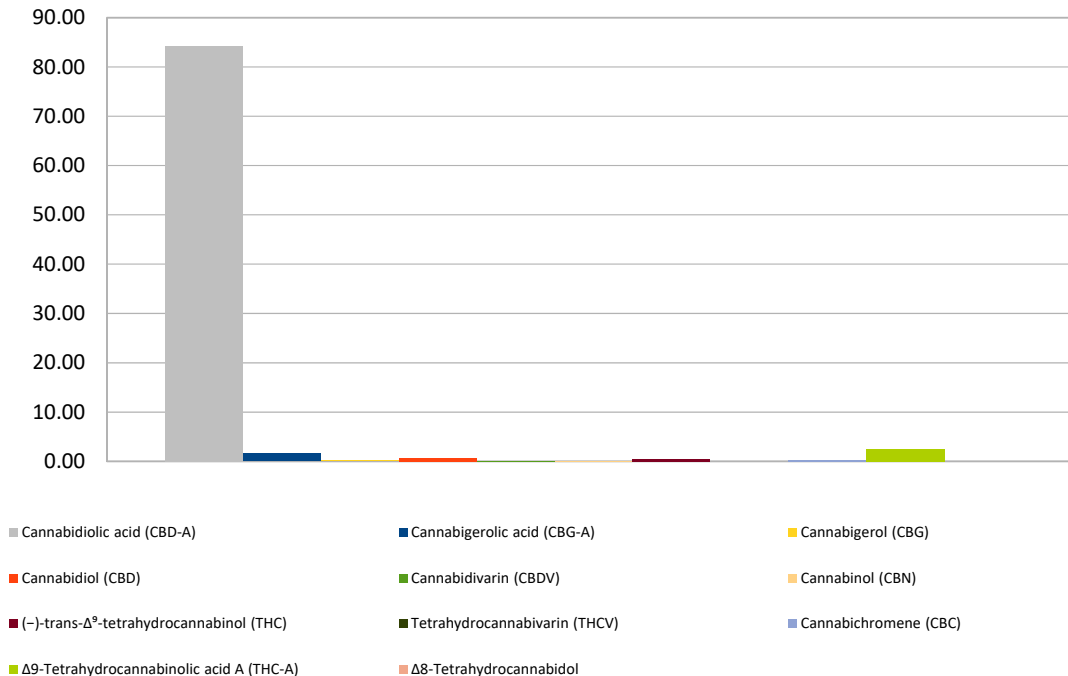
<http://SacredHeartVortex.mynutra.store>

Customer: My Nutra  
 Customer Sample ID: Hemp-4  
 Laboratory Number: 201811-0013  
 Extraction Technician: GB  
 Analytical Chemist: GB

Extraction Date(s)	Analysis Date(s)
11/1/2018	11/1/2018

Cannabinoid (HPLC)		Results	
	LOD (mg/g)	Percent	mg/g
Δ8-Tetrahydrocannabinol	<0.05		
Cannabidiolic acid (CBD-A)		8.428%	84.28
Cannabigerolic acid (CBG-A)		0.161%	1.61
Cannabigerol (CBG)		0.020%	0.20
Cannabidiol (CBD)		0.077%	0.77
Cannabidivarin (CBDV)		0.013%	0.13
Cannabinol (CBN)		0.005%	0.05
(-)-trans-Δ <sup>9</sup> -tetrahydrocannabinol (THC)		0.045%	0.45
Tetrahydrocannabivarin (THCV)	<0.05		
Cannabichromene (CBC)		0.026%	0.26
Δ9-Tetrahydrocannabinolic acid A (THC-A)		0.255%	2.55
<b>Cannabinoids Total</b>		<b>Percent</b>	<b>mg/g</b>
<b>Max Active THC</b>		<b>0.27%</b>	<b>2.68</b>
<b>Max Active CBD</b>		<b>7.47%</b>	<b>74.69</b>
<b>T. Active Cannabinoids</b>		<b>0.17%</b>	<b>1.73</b>
<b>Total Cannabinoids</b>		<b>9.03%</b>	<b>90.29</b>
<b>Ratios</b>			
<b>28.44 :1 CBD to THC</b>		<b>0.04 :1 THC to CBD</b>	

Cannabinoid (mg/g)





# Terpenes Profile Sacred Heart Vortex

Philip and Susan Madeley  
<http://SacredHeartVortex.mynutra.store>

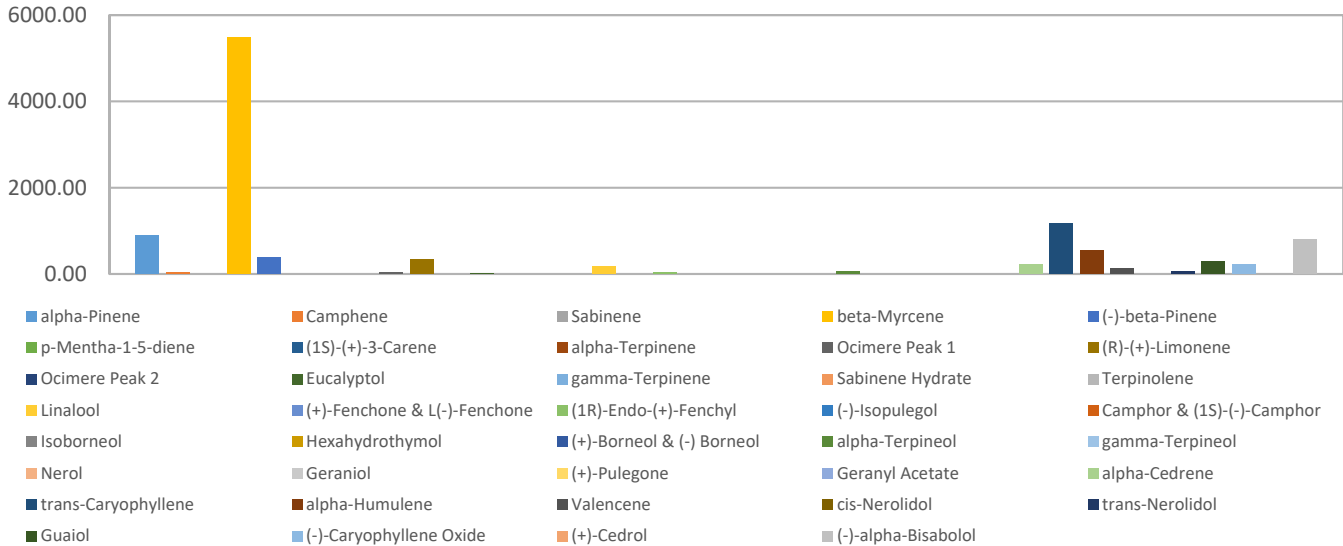
Customer: My Nutra  
 Customer Sample ID: Hemp-3  
 Laboratory Number: 201811-0012  
 Extraction Technician: GB  
 Analytical Chemist: GB

Extraction Date(s):	Analysis Date(s)
11/1/2018	11/1/2018

Terpene	Results ug/g	Terpene	Results ug/g
alpha-Pinene	886.56	Isoborneol	
Camphene	25.96	Hexahydrothymol	
Sabinene		(+)-Borneol & (-) Borneol	
beta-Myrcene	5487.12	alpha-Terpineol	53.53
(-)-beta-Pinene	383.46	gamma-Terpineol	
p-Mentha-1-5-diene		Nerol	
(1S)-(+)-3-Carene		Geraniol	
alpha-Terpinene		(+)-Pulegone	
Ocimere Peak 1	30.16	Geranyl Acetate	
(R)-(+)-Limonene	338.73	alpha-Cedrene	213.70
Ocimere Peak 2		trans-Caryophyllene	1180.55
Eucalyptol	22.97	alpha-Humulene	550.43
gamma-Terpinene		Valencene	119.43
Sabinene Hydrate		cis-Nerolidol	
Terpinolene		trans-Nerolidol	46.53
Linalool	165.57	Guaiol	281.01
(+)-Fenchone & L(-)-Fenchone		(-)-Caryophyllene Oxide	223.09
(1R)-Endo-(+)-Fenchyl	35.15	(+)-Cedrol	
(-)-Isopulegol		(-)-alpha-Bisabolol	805.87
Camphor & (1S)-(-)-Camphor			

Empty result indicates data is less than detection limit. Reporting Limit is roughly 40 ug/g depending on amount extracted.

Terpenes (ug/g)





Altitude Consulting LLC  
3262 So. Platte River Drive  
Englewood, CO. 80110

**Sacred Heart Vortex**  
**Philip and Susan Madeley**  
<http://SacredHeartVortex.mynutra.store>

Email: Gary@AltitudeConsultingllc.com  
Ph: 303.390.1662  
www.altitudeconsultingllc.com

<b>Sample Name</b>	201811-0014	<b>Operator</b>	LCTQ
<b>Sample ID</b>	Hemp-5	<b>Method</b>	Triple Quad 4500
<b>Acquisition Date</b>	2018-11-01T23:17:35	<b>Result Table</b>	11012018
<b>Data File</b>	20181135.wiff	<b>Sample Type</b>	

Pesticides	Conc. (ppm)	Pos/Neg	Action Level (ppm)	Comments
ACEPHATE	0.000	NEG	0.040	
ACEQUINOCYL	0.000	NEG	0.200	
ACETAMIPRID	0.000	NEG	0.020	
ALDICARB	0.000	NEG	0.040	
ABAMECTIN	0.000	NEG	0.070	
AVERMECTIN B1B	0.000	NEG	0.070	
AZOXYSTROBIN	0.000	NEG	0.020	
BIFENAZATE	0.000	NEG	0.020	
BIFENTHRIN	0.000	NEG	0.020	
BOSCALID	0.000	NEG	0.040	
CARBARYL	0.000	NEG	0.020	
CARBOFURAN	0.000	NEG	0.020	
CHLORANTRANILIPROLE	0.000	NEG	0.020	
CHLOREFENAPYR	0.000	NEG	0.100	
CHLORPYRIFOS	0.000	NEG	0.020	
CLOFENTEZINE	0.000	NEG	0.020	
CYFLUTHRIN	0.000	NEG	0.100	
CYPERMETHRIN	0.000	NEG	0.100	
DAMINOZIDE	0.000	NEG	0.100	
DIAZINON	0.000	NEG	0.020	
DICHLORVOS	0.000	NEG	0.010	
DIMETHOATE	0.000	NEG	0.020	
ETHOPROPHOS	0.000	NEG	0.020	
ETOXAZOLE	0.000	NEG	0.010	
FENOXYCARB	0.000	NEG	0.020	
FENPYROXIMATE	0.000	NEG	0.040	
FIPRONIL	0.000	NEG	0.040	
FLONICAMID	0.000	NEG	0.100	
FLUDIOXONIL	0.000	NEG	0.040	
HEXYTHIAZOX	0.000	NEG	0.100	
IMAZALIL	0.000	NEG	0.040	
IMIDACLOPRID	0.000	NEG	0.020	
KRESOXIM-METHYL	0.000	NEG	0.040	

P = Present but below limit

Disclaimer: The development and performance characteristics of these tests were determined by Altitude Lab Solutions and have not been cleared by the FDA.



Altitude Consulting LLC  
 3262 So. Platte River Drive  
 Englewood, CO. 80110

**Sacred Heart Vortex  
 Philip and Susan Madeley**  
<http://SacredHeartVortex.mynutra.store>

Email: Gary@AltitudeConsultingllc.com  
 Ph: 303.390.1662  
 www.altitudeconsultingllc.com

MALATHION A	0.000	NEG	0.050	
METALAXYL	0.000	NEG	0.020	
METHIOCARB	0.000	NEG	0.020	
METHOMYL	0.000	NEG	0.040	
MGK 264	0.000	NEG	0.020	
MYCLOBUTANIL	0.000	NEG	0.040	
NALED	0.000	NEG	0.050	
OXAMYL	0.000	NEG	0.100	
PACLOBUTRAZOL	0.000	NEG	0.040	
PARATHION METHYL	0.000	NEG	0.100	
PERMETHRINS	0.000	NEG	0.040	
PHOSMET	0.000	NEG	0.020	
PIPERONYL BUTOXIDE	0.000	NEG	0.200	
PRALLETHRIN	0.000	NEG	0.020	
PROPICONAZOLE	0.000	NEG	0.040	
PROPOXURE	0.000	NEG	0.020	
PYRETHRINS CINERIN 1	0.000	NEG	0.500	
PYRETHRINS JASMOLIN 1	0.000	NEG	0.500	
PYRETHRINS PYRETHRIN 1	0.000	NEG	0.500	
PYRIDABEN	0.000	NEG	0.020	
SPINOSYN A	0.000	NEG	0.060	
SPINOSYN D	0.000	NEG	0.060	
SPIROMESIFEN	0.000	NEG	0.030	
SPIROTETRAMAT	0.000	NEG	0.020	
SPIROXAMINE	0.000	NEG	0.040	
TEBUCONAZOLE	0.000	NEG	0.010	
THIACLOMPRID	0.000	NEG	0.020	
THIAMETHOXAM	0.000	NEG	0.020	
TRIFLOXYSTROBIN	0.000	NEG	0.020	

P = Present but below limit